

FOR LEASE NEW PAD BUILDING

TUSTIN, CA




NEWPORT AVE AT  Fwy OFFRAMP
 1,404 SF (DIVISIBLE)
 NEXT TO **Little Caesars**



**YOUR
SIGN
HERE!**



PROJECT DESCRIPTION

Location	Strata Tustin Center 14099-111 Newport Avenue, Tustin, CA <ul style="list-style-type: none"> At  Fwy Offramp Pad at Hard Corner (Newport/Mitchell)
Size	Pad Building 2,655 sf overall <ul style="list-style-type: none"> 1,404 sf available
Parking	57 Spaces overall center
Site Highlights	<ul style="list-style-type: none"> Great Fwy Access (5 & 55 Fwys) Signalized Corner Left Turn Access Great Visibility Dense Infill Trade Area Brand New, First Class Construction -- Completed August 2010 Space Next to Little Caesars Signage on Corner Newport Ave. extension will connect to the 55 Fwy and create a major corridor to the South Coast Metro/Airport area
Demo Highlights	<ul style="list-style-type: none"> Population 226,237 (3 mi. radius) Average HH Inc. \$80,181 (3 mi. radius)
Traffic Counts	<ul style="list-style-type: none"> 36,500 (Newport Avenue at  Fwy) 280,000 ( Fwy at Newport Avenue)



North Elevation of Pad Building



Main Part of Shopping Center

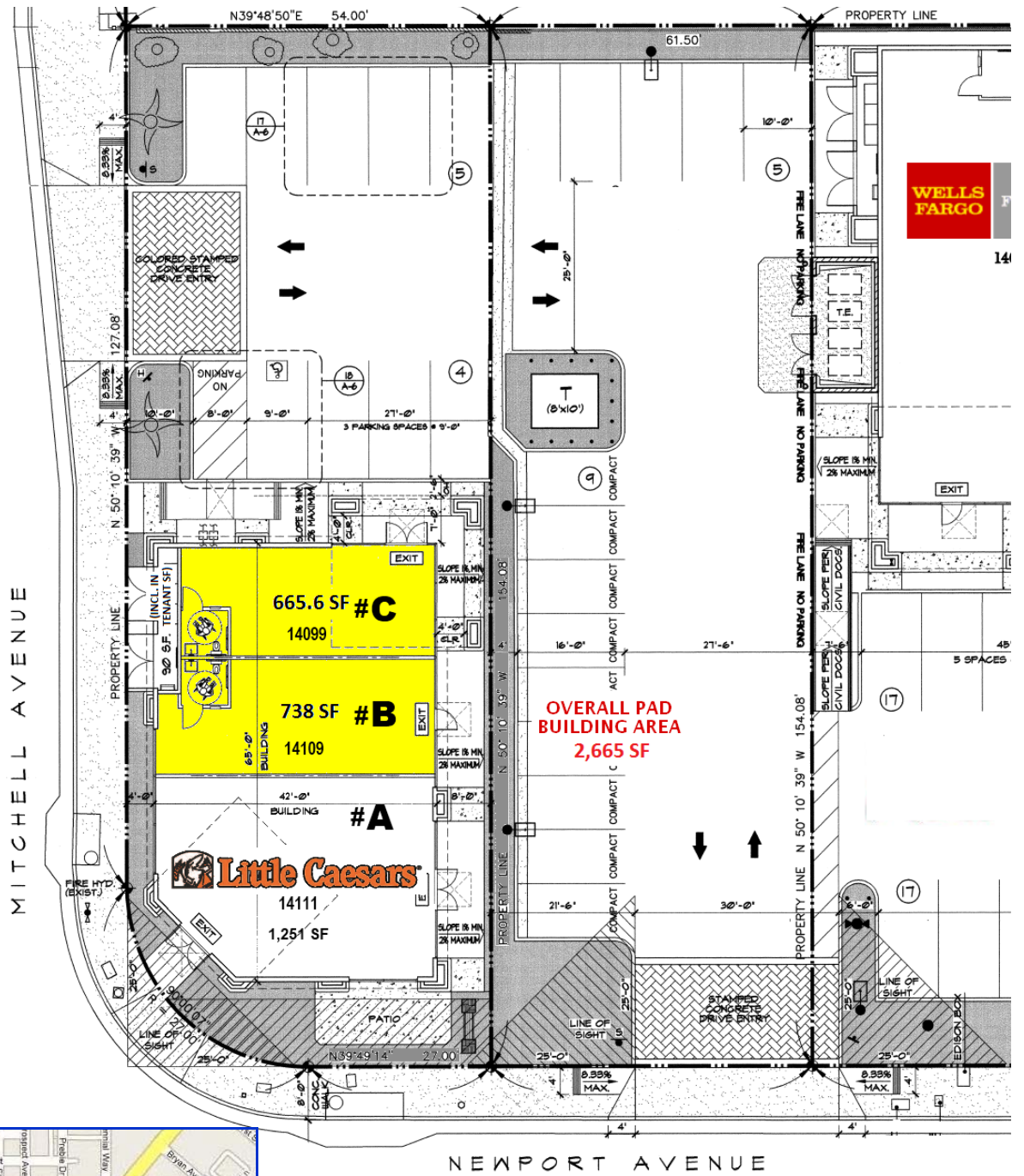
FOR MORE INFORMATION

Jeff Mayhew
(949) 833-8400, ext. 250
jeff@strataproperties.com



S T R A T A
 P R O P E R T I E S

Pad Building Site Plan



STRATA
PROPERTIES

4770 VON KARMAN AVENUE
NEWPORT BEACH, CALIFORNIA 92660
TELEPHONE (949) 833-8400 • FAX (949) 767-5910
info@strataproperties.com • www.strataproperties.com